

MONTHLY MEMBERSHIP PROGRESS REPORT

District 201V6

Results as of: 12/31/2023

GMT:

LOCATION AUSTRALIA

GMT CA

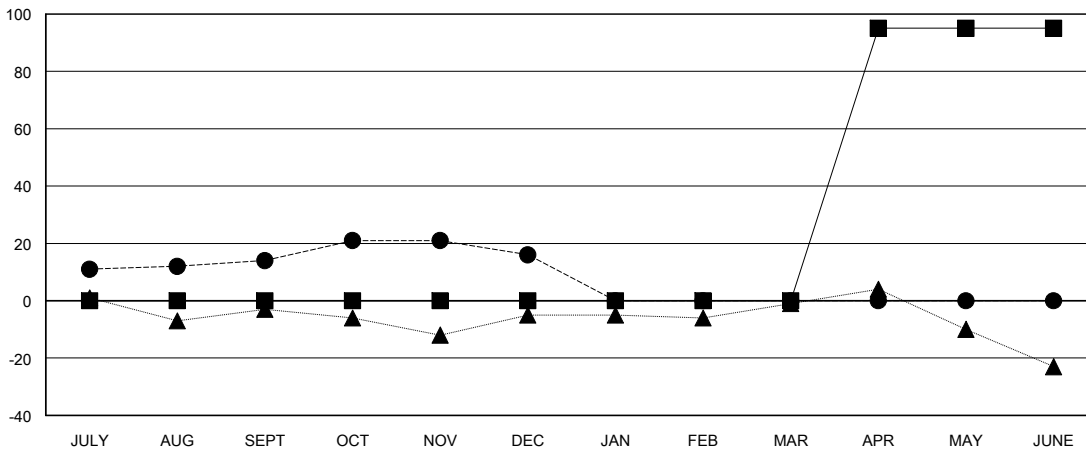
Clubs			
RESULTS FOR 2023-2024			
QUARTER	NEW CLUB GOAL	NEW CLUBS	DROPPED CLUBS
JULY/AUG/SEPT	0	0	0
OCT/NOV/DEC	1	0	0
JAN/FEB/MAR	0	0	0
APR/MAY/JUNE	0	0	0

Members			
RESULTS FOR 2023-2024			
QUARTER	MEMBER GROWTH NET GOAL	MEMBER GROWTH ACTUAL	DROPPED MEMBERS ACTUAL (including transfers)
JULY/AUG/SEPT	0	48	33
OCT/NOV/DEC	0	18	14
JAN/FEB/MAR	0	0	0
APR/MAY/JUNE	95	0	0

GOALS AND ACTUAL NEW CLUBS CUMULATIVE



GOALS AND ACTUAL MEMBERS CUMULATIVE



DROPPED CLUBS: 0	23 CLUBS OF 55 ADDED 1 OR MORE NEW MEMBERS	GENDER DISTRIBUTION
		MALE 698 (65.42%)
		FEMALE 368 (34.49%)
DROPPED MEMBERS	CLICK HERE FOR CUMULATIVE MEMBERSHIP DATA	TOTAL FAMILY UNIT MEMBERS 122
DECEASED 5		FAMILY MEMBERS PAYING HALF DUES 61
CLUB CANCELLED 0		
OTHER 42		
TOTAL 47		